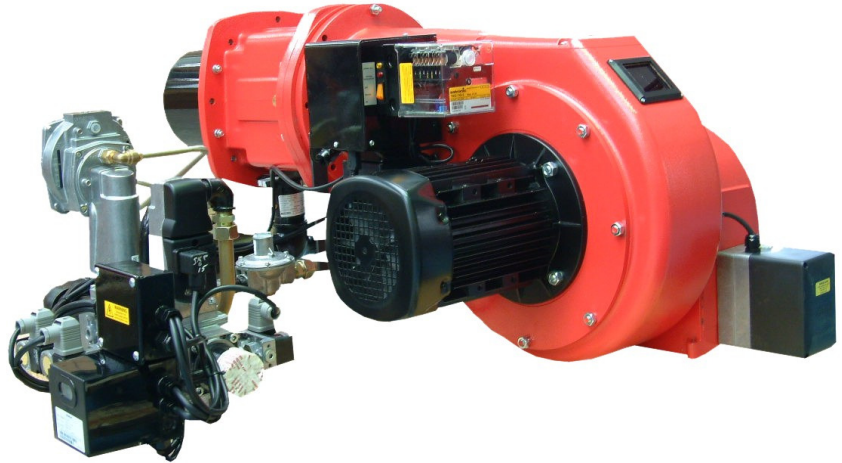


NG55/NG60/NG65/NG75

Gas Burner

424kW - 2092kW



NG55/60/65/75 Gas Burner features:

- Energy saving and compatible with environmental requirements
- Quiet in operation
- Reliable and trouble-free
- Designed and approved in accordance with the European Standard EN 676
- Industry standard components easily available
- 2-stage or fully modulating operation (modulation optional extra)
- Pre-wired control panel and simple plug-in gas train facilitates the installation
- Fully closing air damper
- Fuel: Natural Gas or LPG (Towns Gas or Biogas on request)
- Optional extras:
 - Air inlet silencer
 - Separate water level control (AOTC) panel
- All kW ratings are nett CV

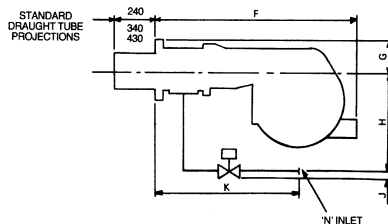
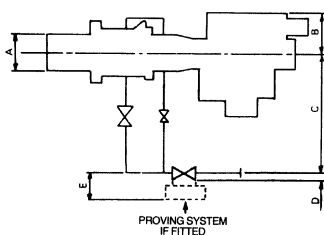
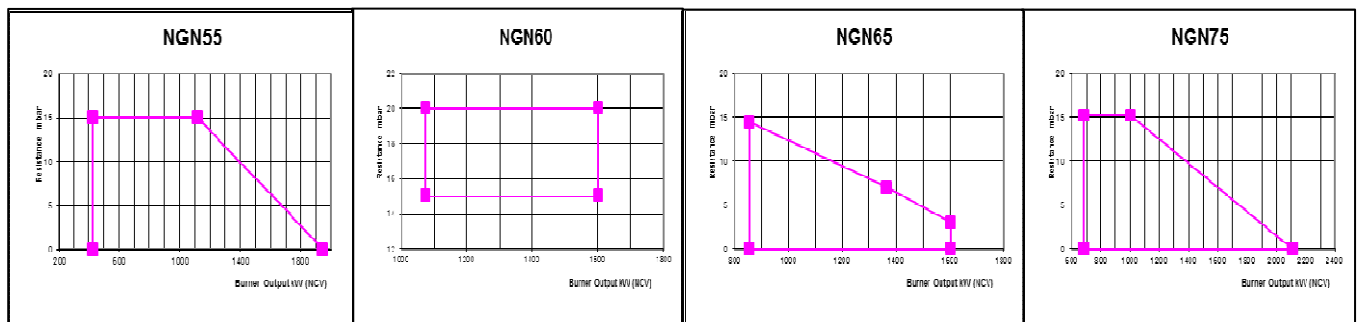


For more information on all Nu-way products
please visit www.nu-way.co.uk

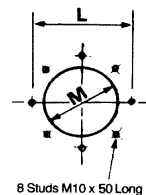
Burner Type		NGN55	NGN 60	NGN65	NGN75
Capacity	kW	424-1931	1065-1588	848-1588	677-2094
Fan Motor	V/ph/Hz	380-420/3/50	380-420/3/50	380-420/3/50	380-420/3/50
	kW	3.0	4.0	2.2	3.0
Start Current	A/each phase	35	45	25	35
Run Current	A/each phase	6.6	8.5	5.0	6.6
Cable size	mm ²	1.5	2.5	1.5	1.5
Fuse	HRC (A)	20	25	16	20
Control unit		LFL1	LFL1	LFL1	LFL1
Operation Options		2 Stage / Mod	2 Stage / Mod	2 Stage / Mod	2 Stage / Mod
Flame monitoring		UV Cell	UV Cell	UV Cell	UV Cell
Air damper		Electric Actuator FCAD	Electric Actuator FCAD	Electric Actuator FCAD	Electric Actuator FCAD
Max inlet gas pressure	mbar	300	300	300	300
Noise @ 1m	dBA	87	87	87	87
Gross weight	kg	101	101	101	130
Volume	m ³	0.77	0.77	0.77	0.77

Other electrical supply options available on request.

Performance Fields



Boiler Frontplate drilling



Burner	A	B	C	D	E	F	G	H	J	K	L PCD	M	N
NG55	224	260	430	70	270	1183	166	300	110	745	305	234	2" BSP
NG60	254	260	430	70	270	1115	166	300	110	745	305	265	2" BSP
NG65	224	260	430	70	270	1183	166	300	110	745	305	234	2" BSP
NG75	254	260	865	100	295	1183	166	354	100	685	305	265	DN65 PN16

Enertech Limited, P O Box 1, Vines Lane
Droitwich, Worcestershire, WR9 8NA

tel: +44 (0) 1905 794331 • fax: +44 (0) 1905 794017
email: info@nu-way.co.uk • web: www.nu-way.co.uk



Enertech Group

Issue 12/12